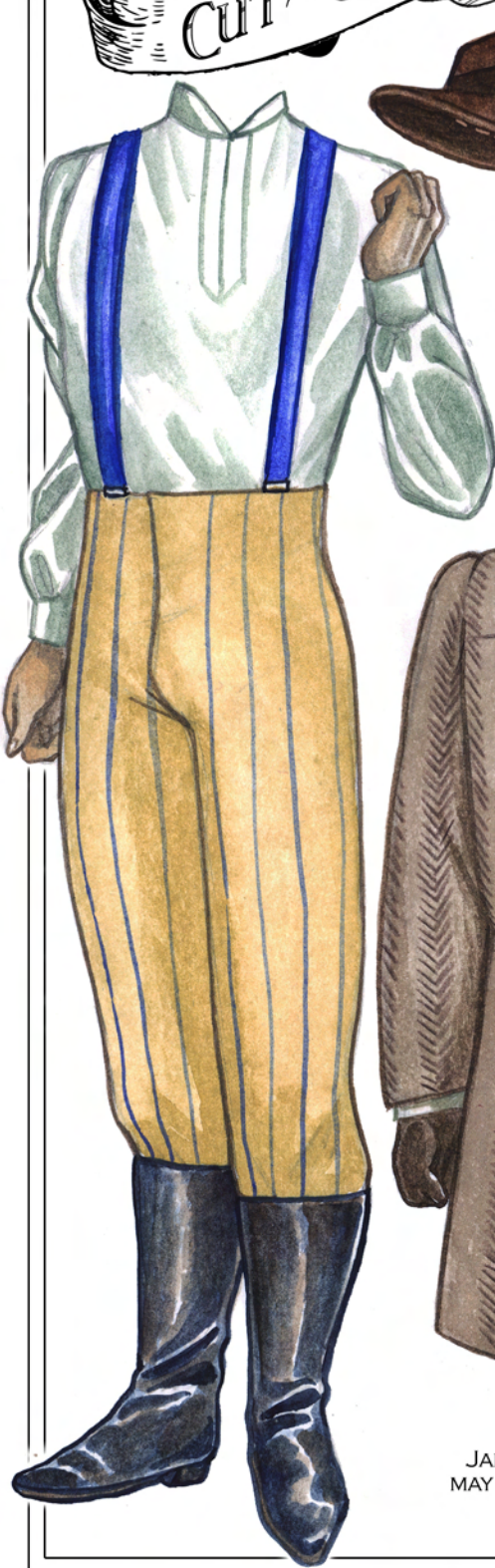


# RECONSTRUCTION

CUT-OUTS

PLATE NO. 7



A HAT FOR JAMES  
cut along the dotted line for proper fitting



A FANCY VEST AND CRAVAT FOR JAMES



A COAT AND GLOVES FOR JAMES



A TRAVELING DRESS WITH SIMPLE TRIMMING, GLOVES, AND A RETICULE FOR EMMALINE

Tabs may be added to clothing pieces to attach them to the characters.

JAMES & EMMALINE HUNTER  
MAY BE FOUND ON PLATE NO. 3

Reconstruction © 2011. All rights reserved. The story and characters in this publication are fictional. Any resemblance to actual persons, living or dead (excepting satirical purposes) is purely coincidental. No portion of this publication or its supplements may be reproduced by any means (excepting legitimate reasons of review) without express permission from the author.